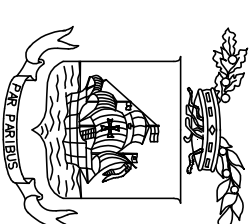
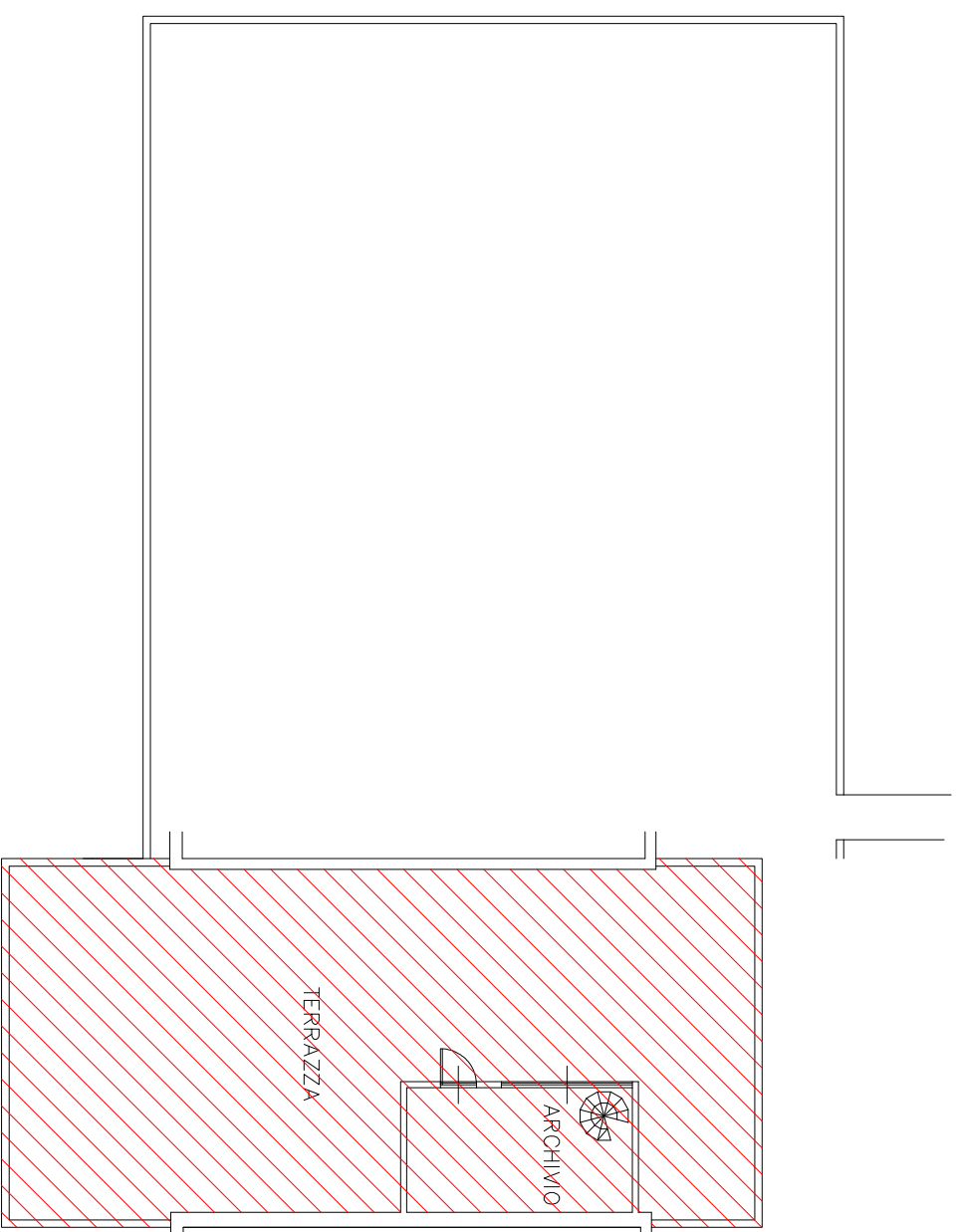
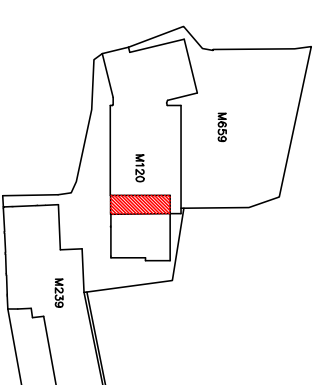


ALLEGATO "D"



PROVINCIA DI SAVONA
Setore Concertativi, Ambiente
ed Edilizia

**Servizio Nuovi Interventi
Edilizi**



PLESSO DI VARAZZE
VIA S. G. BOSCO N. 38

EX SUCCURSALE "BOSELLI" DI VARAZZE

PLANIMETRIA PIANO TERZO
ALA NORD

SCALA 1:200